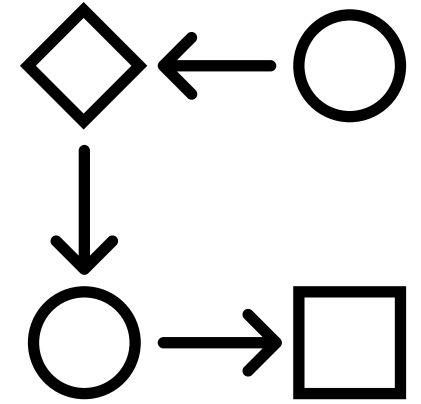


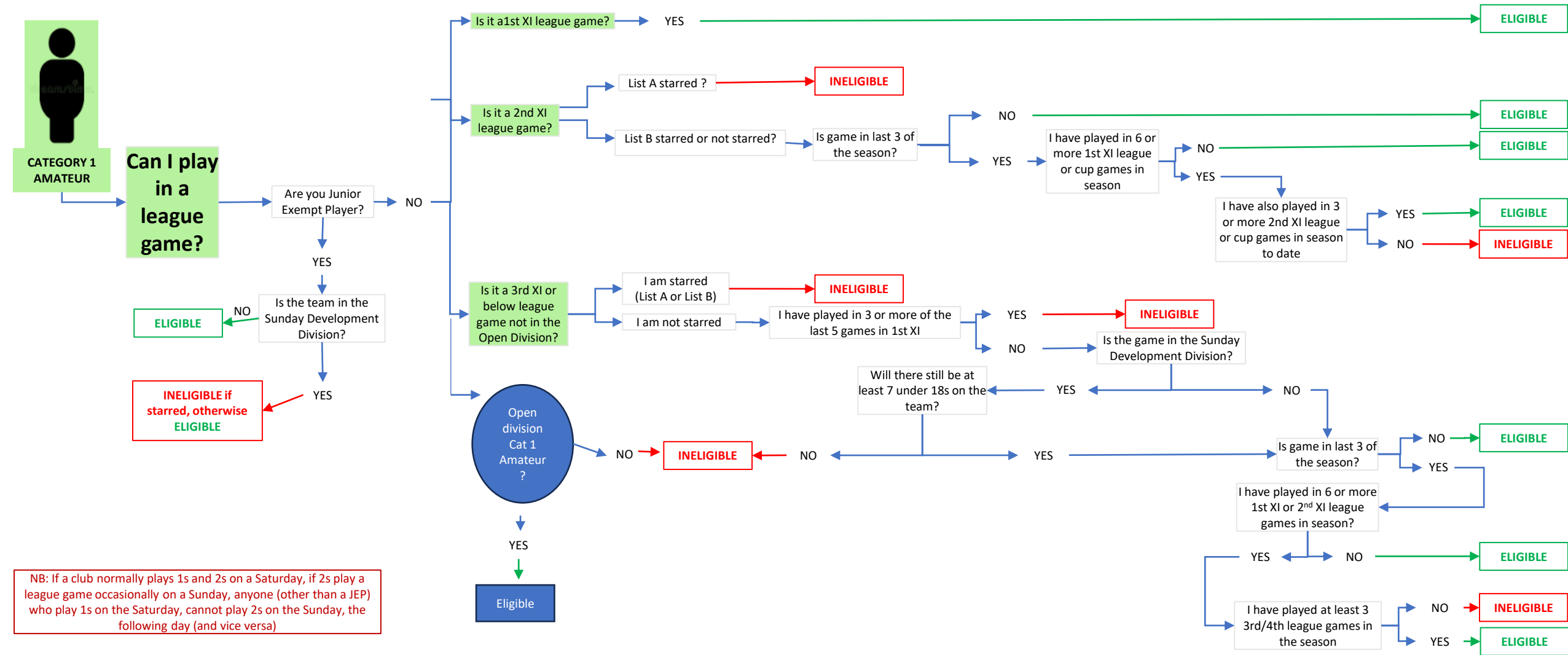
GMCL Guidance 2024

Player

Eligibility

Flow Charts

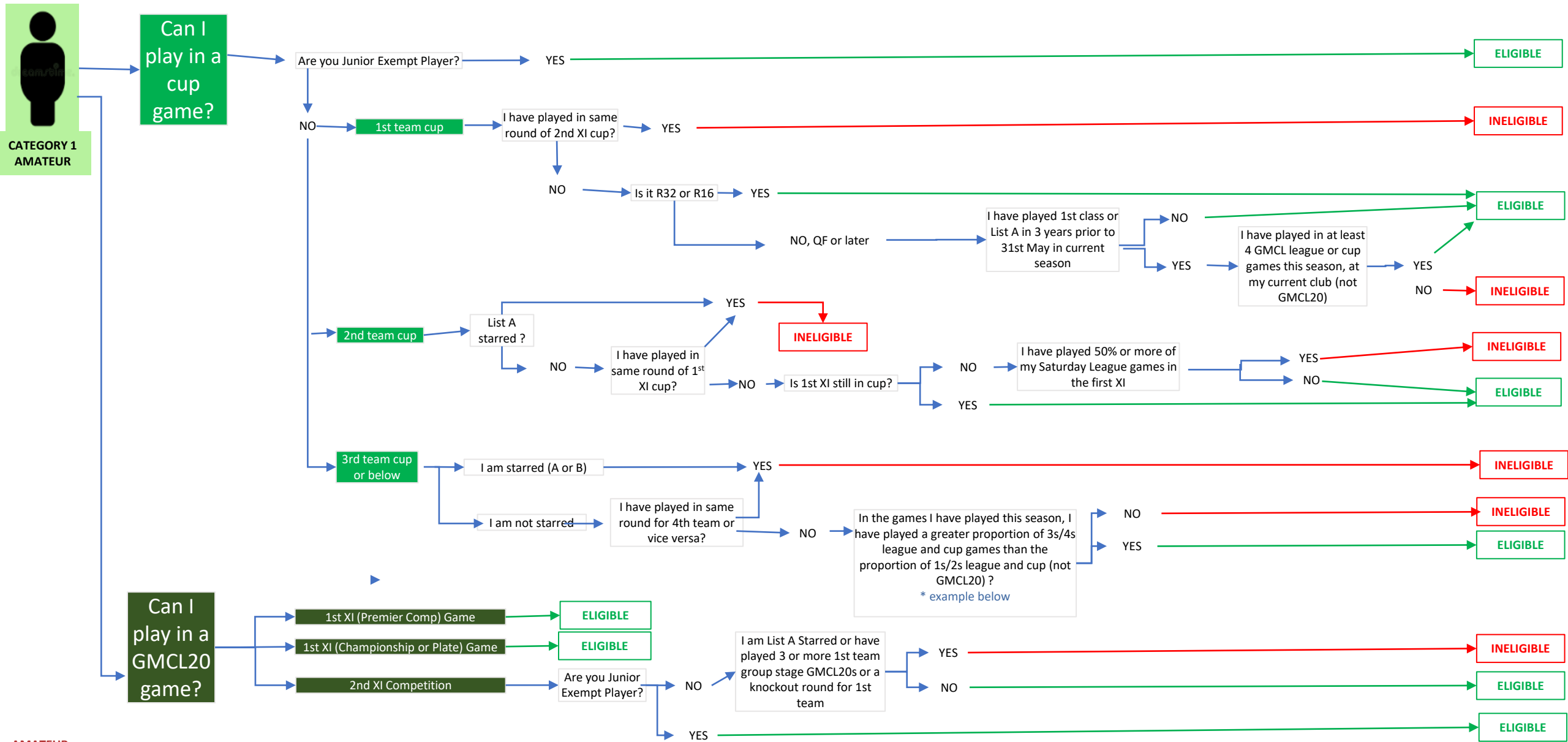




NB: If a club normally plays 1s and 2s on a Saturday, if 2s play a league game occasionally on a Sunday, anyone (other than a JEP) who play 1s on the Saturday, cannot play 2s on the Sunday, the following day (and vice versa)

- AMATEUR**
- This is a person who engages in a sport or creative activity solely for personal enjoyment and
 - who does not now (current season) and is not seeking to derive a wage, income or a living from the (current season) activity.
 - This includes payment in kind, for playing or coaching including that is covering all, or the majority of, their costs for travelling to the club or matches.
 - A person playing or coaching in a "Professional" charity game where there is no personal gain can still be considered an amateur player where there are no other indicators of being a professional player.

***Example**
 Calculation 1: Player has played 3 of the 4 possible 3s/4s league & cup games (75%)
 Calculation 2: Player has played 4 out of 8 possible 1s/2s league & cup games (50%)
 Calc 1 > Calc 2 so Player is eligible in 3rd team cup.



AMATEUR

- This is a person who engages in a sport or creative activity solely for personal enjoyment and
- who does not now (current season) and is not seeking to derive a wage, income or a living from the (current season) activity.
- This includes payment in kind, for playing or coaching including that is covering all, or the majority of, their costs for travelling to the club or matches.
- A person playing or coaching in a "Professional" charity game where there is no personal gain can still be considered an amateur player where there are no other indicators of being a professional player.

***Example**
 Calculation 1: Player has played 3 of the 4 possible 3s/4s league & cup games (75%)
 Calculation 2: Player has played 4 out of 8 possible 1s/2s league & cup games (50%)
 Calc 1 > Calc 2 so Player is eligible in 3rd team cup.



NO, INELIGIBLE

Only Cat 3 in the team?

YES

Can I play in a league game?

Is it for a 1st playing in the Saturday competition?

YES

ELIGIBLE

NO

Is it a 2nd team playing in Sat comp?

NO

INELIGIBLE

YES

Is it last 3 games?

NO

ELIGIBLE

YES

I have played in 6 or more 1st XI league or cup games in season

NO

ELIGIBLE

YES

I have also played in 3 or more 2nd XI league or cup games in season to date

YES

ELIGIBLE

NO

INELIGIBLE

Can I play in a cup game?

Is it a 1st XI team from the Saturday League competition

YES

NO

NO, INELIGIBLE

Is it a 2nd team from Saturday league comp?

YES

Played in same round of 2nds cup?

INELIGIBLE

NO

Is it R32 or R16 ?

YES

ELIGIBLE

NO, it's QF or later

YES

ELIGIBLE

I have played in at least 4 league or cup games this season, not GMCL20

YES

INELIGIBLE

NO

Can I play in a GMCL20 game?

2nd XI Competition

INELIGIBLE if played in either 3 1st team GMCL20 group games or one 1st team knockout, otherwise ELIGIBLE

1st XI Championship Game or Plate

ELIGIBLE

1st XI (Premier Comp) Game

Played in same round of 1s cup?

INELIGIBLE

NO

Are 1sts still in Cup?

YES

ELIGIBLE

NO

I have played 50% or more of my Sat league games on the 1st team

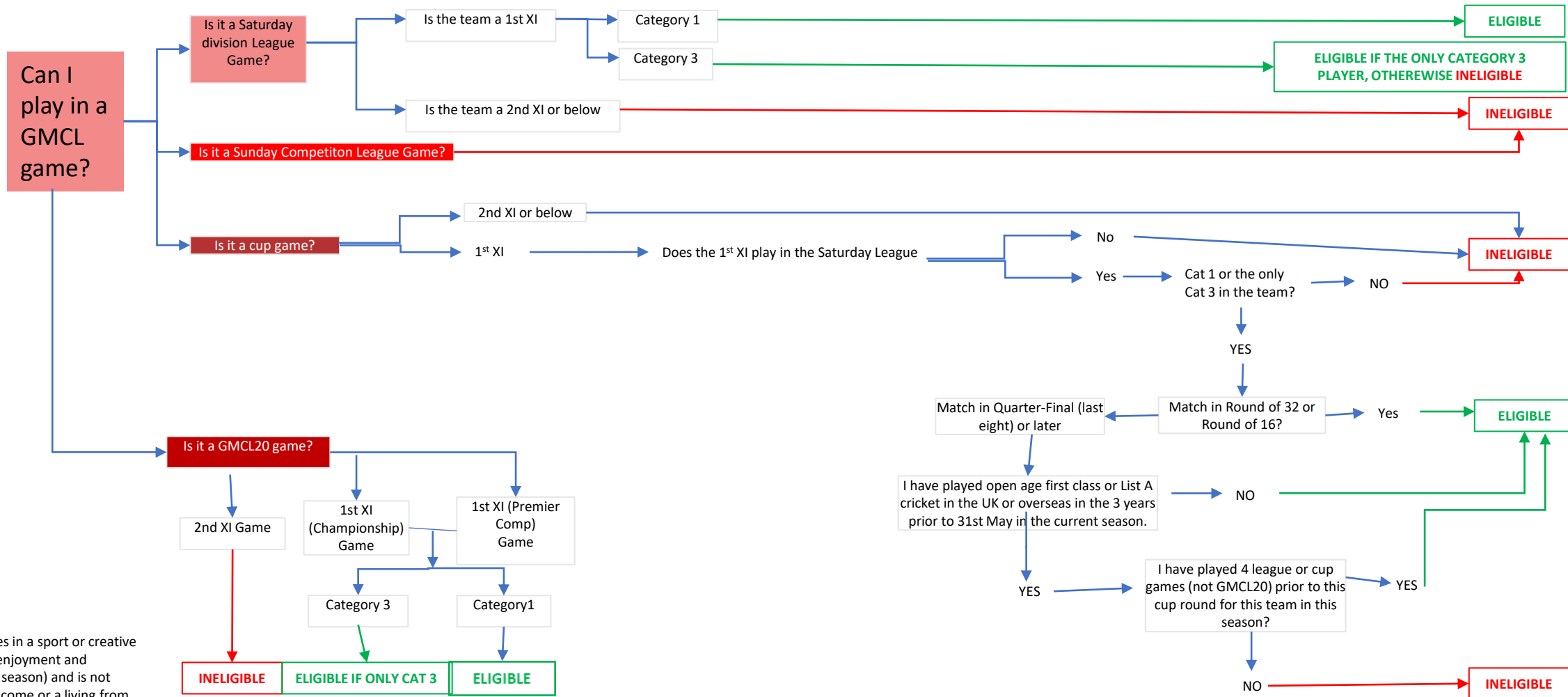
NO

YES

INELIGIBLE

- AMATEUR**
- This is a person who engages in a sport or creative activity solely for personal enjoyment and who does not now (current season) and is not seeking to derive a wage, income or a living from the (current season) activity.
 - This includes payment in kind, for playing or coaching including that is covering all, or the majority of, their costs for travelling to the club or matches.
 - A person playing or coaching in a "Professional" charity game where there is no personal gain can still be considered an amateur player where there are no other indicators of being a professional player.

CATEGORY 1 or CATEGORY 3 PAID PLAYER OR NAMED PROFESSIONAL
(Any player not meeting all of the criteria of Amateur below)



- AMATEUR**
- This is a person who engages in a sport or creative activity solely for personal enjoyment and who does not now (current season) and is not seeking to derive a wage, income or a living from the (current season) activity.
 - This includes payment in kind, for playing or coaching including that is covering all, or the majority of, their costs for travelling to the club or matches.
 - A person playing or coaching in a "Professional" charity game where there is no personal gain can still be considered an amateur player where there are no other indicators of being a professional player.

- PROFESSIONAL**
- GMCL is an open league and clubs may pay or reward multiple persons, directly or indirectly
 - One of those players must be the "Named Professional" all other such players are still considered Professionals but need not be named but all must be named as Category A starred players.